



SAISI

STEEL MANUAL

for Product Identification

Edition 2
September 2006

This manual has been compiled and published by the South African Iron & Steel Institute (SAISI), with the assistance of its members as part of a continuous support programme to Customs and Excise to enhance the quality of statistical data and to combat illegal trade activities in respect of steel imports and exports.

Foreword

The South African Iron and Steel Institute (SAISI) takes pride in publishing this second edition of the Steel Manual for Product Identification. The first edition, published in July 2003, was well received and proved to be very useful. With the publication of this second edition the primary steel industry once again demonstrates continued commitment to, and support of, the indispensable role of Government, through Customs and Excise, in providing an equitably regulated international trade interface with our trading partners.

In this edition several references to dumping duties that have expired or were repealed by Government, have been removed. Additional information on especially tubes and pipes has also been added. The most noticeable change however is the removal of the standard 5% ad valorem import duty on all primary steel products, as this duty was repealed by the Minister of Trade and Industry as of 30 May 2006.

Use of the manual will enhance the ability of officials of Customs and Excise to correctly identify internationally traded steel products in the course of their duties.

Correct product identification is pivotal to the compilation of a reliable database on which international trade statistics are based. The accuracy of the database underpins the veracity of the statistics used for, amongst other purposes, petitions brought by local industry for remedial action by Government against unfair or illegal imports into South Africa.

Inaccurate statistics could totally negate the efforts of industry to prove dumping and / or injury when such petitions are considered by South Africa's International Trade Administration Commission (ITAC). Products unfairly or illegally imported have a direct undermining effect on the economy leading to a loss in domestic sales by local producers which will put jobs at risk, and will result ultimately in avoidable unemployment and socio-economic decay.

Accurate statistics, based on correct product classification, contribute to the image of South Africa as a fair and reliable trading partner contributing eventually to the well being of all South African citizens.

This manual is now also available on SAISI's website for quick reference and/or downloading. Please follow the link www.saisi.co.za

Peter Dieterich

Secretary General South African Iron and Steel Institute
September 2006

INDEX




Pages 1 to 8: Primary Flat Steel Products

- P 1 - Steel Slabs
- P 2 - Hot Rolled Plate
- P 3 - Hot Rolled Coil
- P 4 - Cold Rolled Coil
- P 5 - Hot Dipped Galvanized Coil
- P 6 - Electro Galvanized Coil
- P 7 - Tin Plate Coil
- P 8 - Colour Coated Coil 

Pages 9 to 23: Primary Long Steel Products

- P 9 - Blooms
- P 10 - Billets
- P 11 - Reinforcing bar in Coils
- P 12 - Reinforcing bar in Lengths
- P 13 - Wire Rod in Coils
- P 14 - Steel Wire
- P 15 - Equal Angles
- P 16 - Unequal Angles
- P 17 - I-Beams
- P 18 - Universal Beams
- P 19 - Channels
- P 20 - Rounds (Round Bar)
- P 21 - Flat Bar
- P 22 - Rails
- P 23 - Seamless Pipe

Pages 24 to 36: Value Added Products

- P 24 - Welded Galv Pipes 
- P 25 - Welded Steel Tubes 
- P 26 - Stranded Wire
- P 27 - Reinforcing Welded Steel Mesh (Sheets)
- P 28 - Reinforcing Welded Steel Mesh (Coiled)
- P 29 - 36 Bolts & Nuts 

Anti-Dumping Duties

Important Notice:

The majority of steel products included in this manual are usually imported and exported as “open freight”. However, some of these products are containerised when imported or exported. Contact SAISI for clarification.

This manual was updated during August 2006. All duties and antidumping duties included in this manual were in force on the date of compilation thereof. Customs officials should note that all duties (including anti-dumping duties), and product prices do change from time to time. It is therefore recommended that the information as reflected in this manual be verified with the South African Iron & Steel Institute (SAISI).

Contacts: Albertus Nel: 012 - 320 2450
Gustav Aucamp: 083 468 1401

Disclaimer

Although due care has been exercised to ensure the correctness of the information contained in this manual, SAISI accepts no liability from whatsoever cause as a result of any action taken on the information contained herein. In cases of doubt, SAISI should be contacted at the contact numbers indicated in this Manual.



Market description: Steel Slabs

Tariff code: 7207.12

Steel slabs containing by mass 0,25% or more carbon

Tariff code: 7207.20

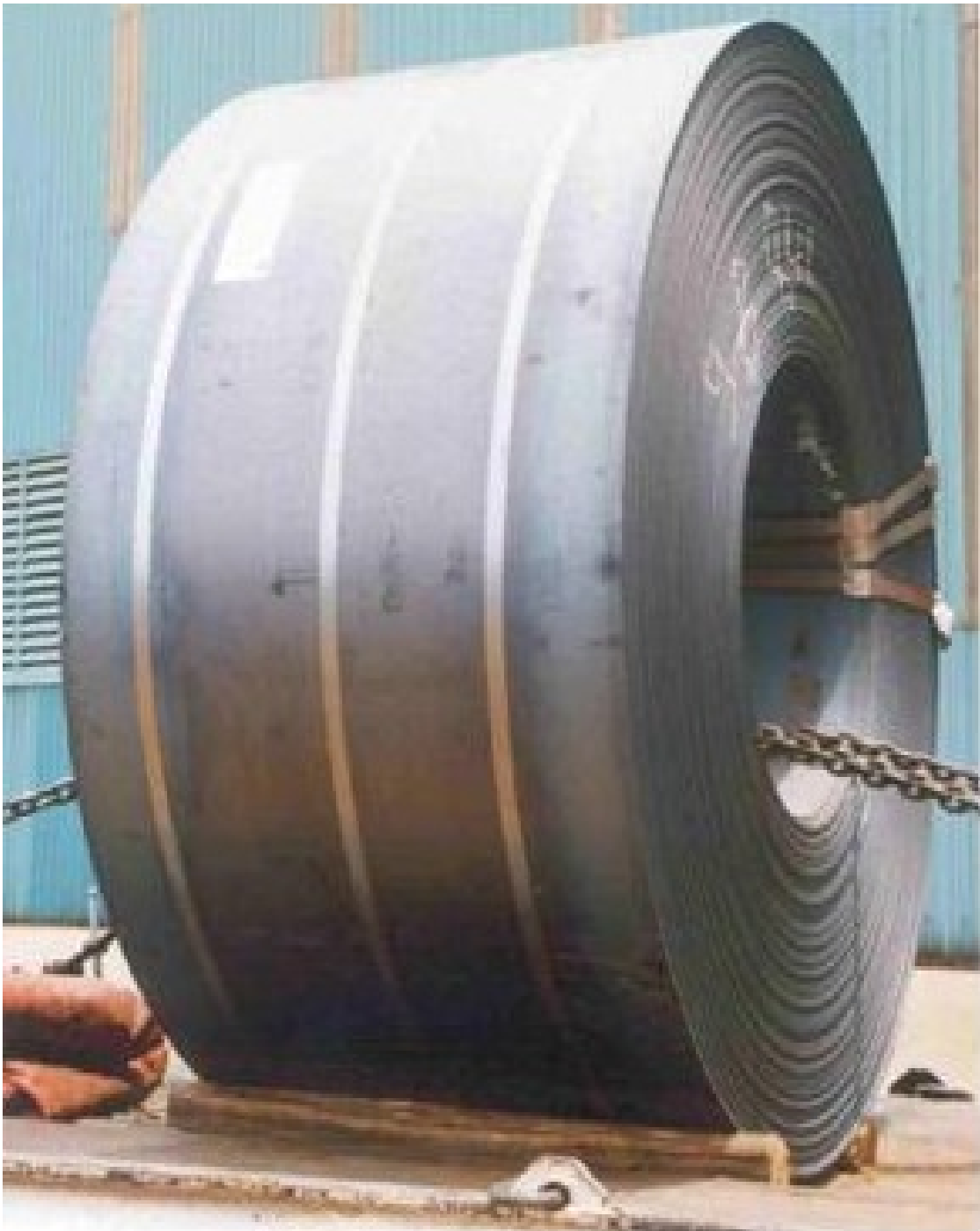
Import tariff duties: Free of duty



Market description: Hot-rolled Plate in lengths

Tariff code: 7208.51 to 7208.54

Import tariff duties: Free of duty



Market description: Hot-rolled Coil

Tariff code: 7208.25 to 7208.39

Coil width less than 600mm – Hot rolled strip

Tariff code: 7211.14 to 7211.19

Import tariff duties: Free of duty



Market description: Cold-rolled Coil
Tariff code: 7209.15 to 7209.18
Coil width less than 600mm – Cold rolled strip
Tariff code: 7211.23 to 7211.29
Import tariff duties: Free of duty



Market description: Hot Dipped Galvanised Coil (also available in sheets)

Tariff code: 7210.49

Coil or sheet width less than 600mm – Hot dipped galvanised strip

Tariff code: 7212.30

Import tariff duties: Free of duty



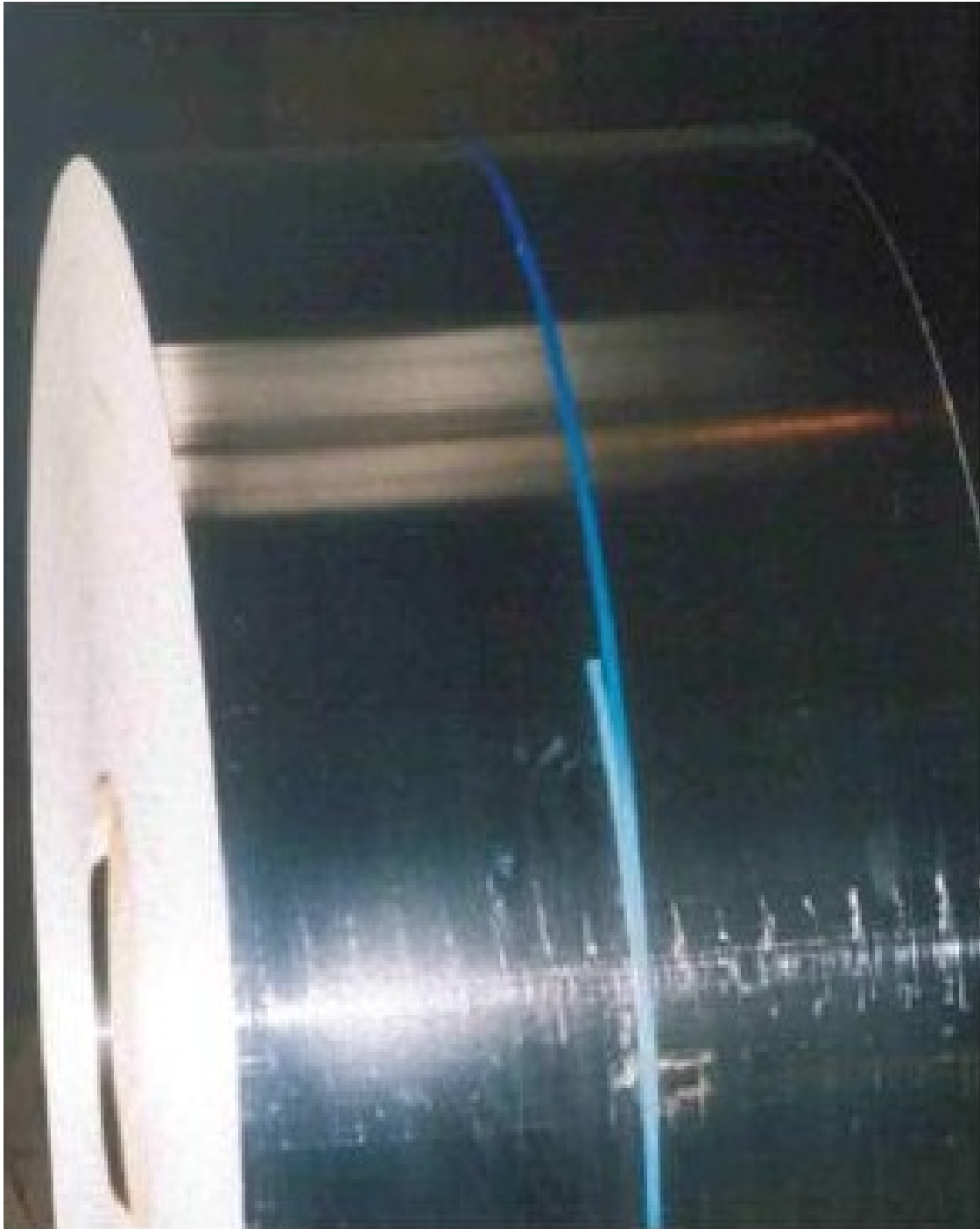
Market description: Electro Galvanised Coil (also available in sheets)

Tariff code: 7210.30

Coil or sheet width less than 600mm – Electro galvanised strip

Tariff code: 7212.20

Import tariff duties: Free of duty



Market description: Tin plate Coil (also available in sheets)

Tariff code: 7210.11 and 7210.12

Coil or sheet width less than 600mm – Tin plate strip

Tariff code: 7212.10

Import tariff duties: Free of duty



Market description: Colour Coated / Colorbond in coils (also available in sheets)

Tariff code: 7210.70

Coil or sheet width less than 600mm – Colour coated strip

Tariff code: 7212.40

Import tariff duties: Free of duty

**Anti-dumping duties: Australia = 79% (see Jacobsens)
(Colour coated sheet & strip, HS codes 7210.70 & 7212.40)**



Market description: Blooms

Tariff code: 7207.11

Blooms containing by mass 0,25% or more of carbon

Tariff code: 7207.20

Import tariff duties: Free of duty



Market description: Billets

Tariff code: 7207.11

Billets containing by mass 0,25% or more of carbon

Tariff code: 7207.20

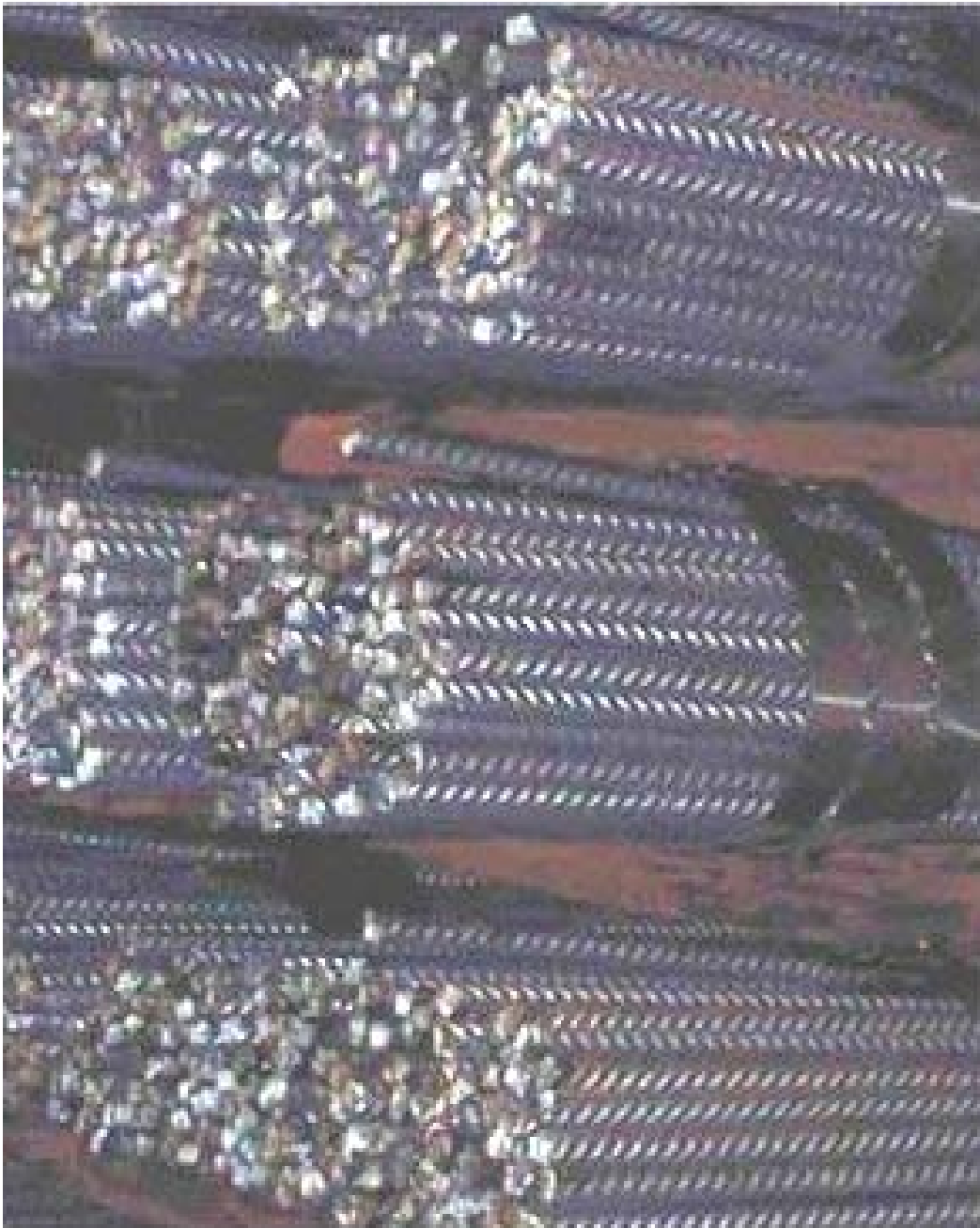
Import tariff duties: Free of duty



Market description: Reinforcing bar in coils

Tariff code: 7213.10

Import tariff duties: Free of duty



Market description: Reinforcing bar in lengths

Tariff code: 7214.20

Import tariff duties: Free of duty



Market description: Wire-rod in coils

Tariff code: 7213.91 to 7213.99

Import tariff duties: Free of duty



Market description: Steel Wire (not plated or coated)
Tariff code: 7217.10 (see Jacobsens for plated and coated Wire products)
Import tariff duties: Free of duty



Market description: Equal Angles
Tariff code: 7216.21 and 7216.40
Import tariff duties: Free of duty



Market description: Unequal Angles (L-sections)

Tariff code: 7216.21 and 7216.40

Import tariff duties: Free of duty



Market description: Sections (I-Beams)
Tariff code: 7216.10 and 7216.32
Import tariff duties: Free of duty



Market description: Universal Beam
Tariff code: 7216.10 and 7216.33
Import tariff duties: Free of duty



Market description: Channels
Tariff code: 7216.10 and 7216.31
Import tariff duties: Free of duty



Market description: Rounds (Round bar)

Tariff code: 7214.99

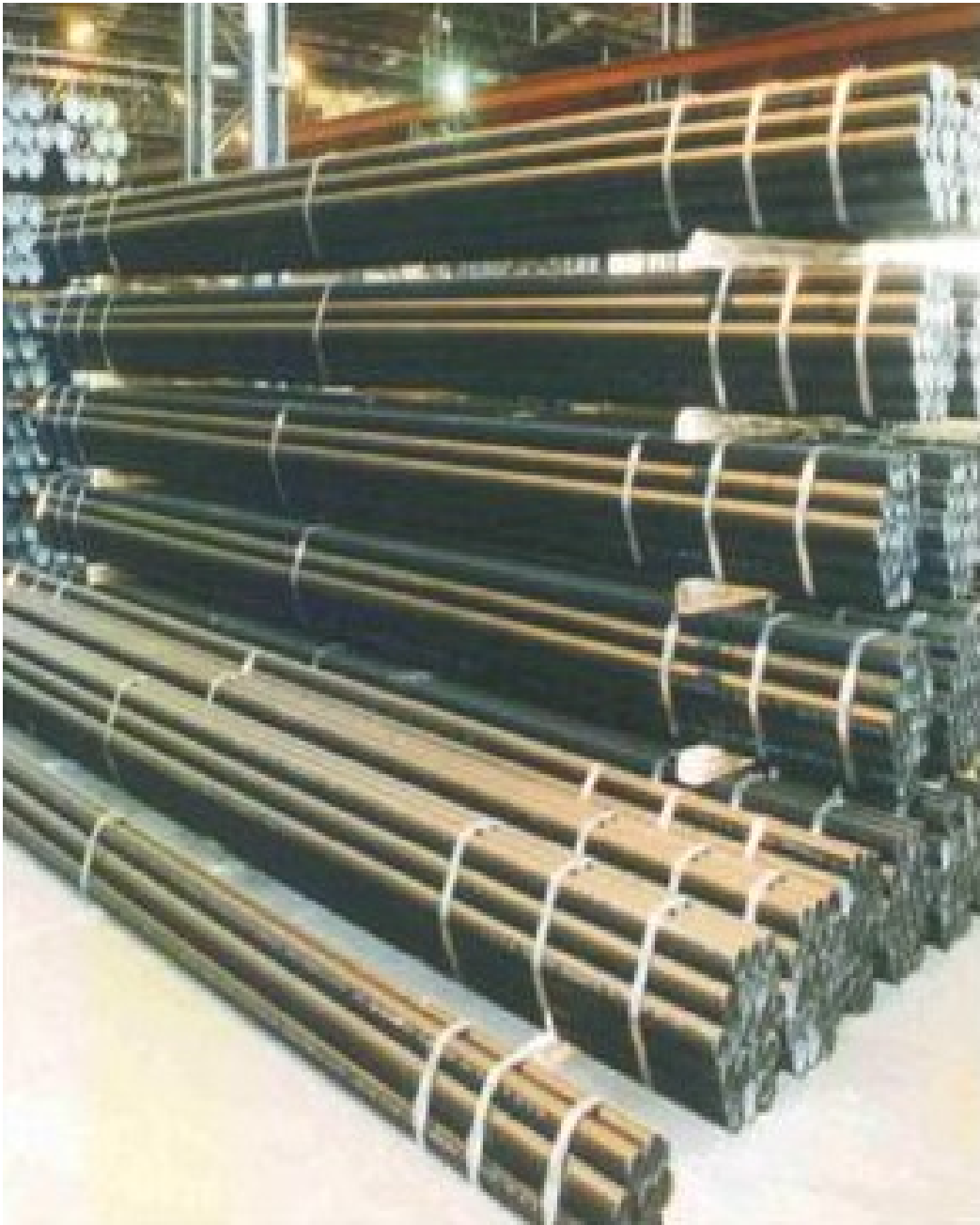
Import tariff duties: Free of duty



Market description: Flat Bar
Tariff code: 7214.91
Import tariff duties: Free of duty



Market description: Rails
Tariff code: 7302.10
Import tariff duties: General = 5%
EU & SADC = Free of duty



Market description: Seamless Pipe

Tariff code: 7304.10 to 7304.90

Import tariff duties: Various, see Jacobsens for clarification

See additional notes and photos on pipes – pages 37 to 44



Market description: Welded Galvanised Steel Pipe

Tariff code: 7306.10 and 7306.30 and 7306.90

Import tariff duties: General = 10%

EU & SADC = Free of duty

Anti-dumping & Countervailing Duties: Various countries = See Jacobsens

See additional notes and photos on pipes – pages 37 to 44

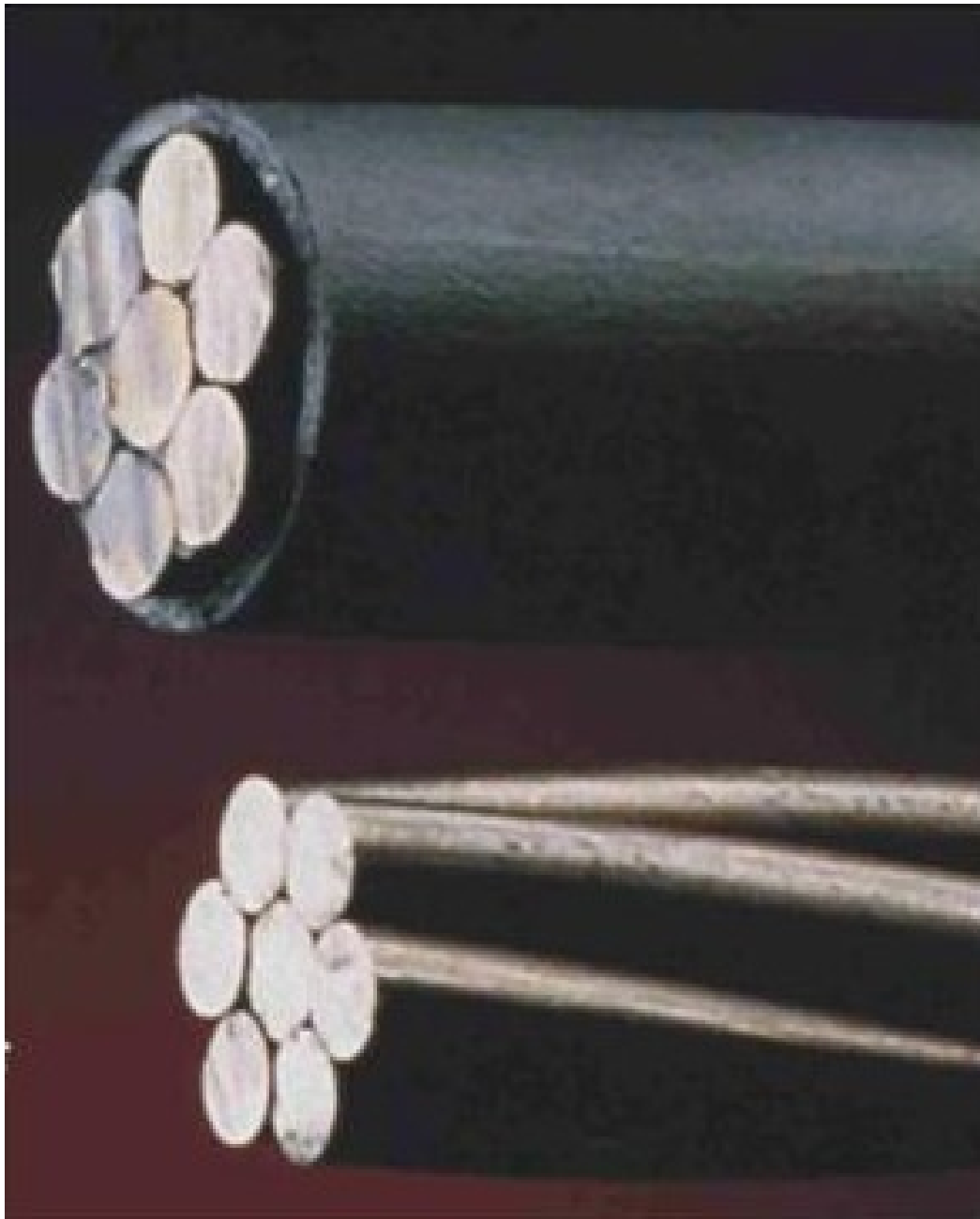


Market description: Welded Steel Tube (Square Tubing)

Tariff code: 7306.60

Import tariff duties: General = 10%

EU & SADC = Free of duty



Market description: Stranded Wire, Ropes & Cables

Tariff code: 7312.10.15 to 7312.90

Import tariff duties: General = 0 - 5% (See Jacobsens)

EU & SADC = Free of duty

Anti-dumping duties: China = 15% to 28%, Korea = 10,4%,

UK = 42% to 72,4%, Germany = 12,9%

India = 17% (Countervailing)

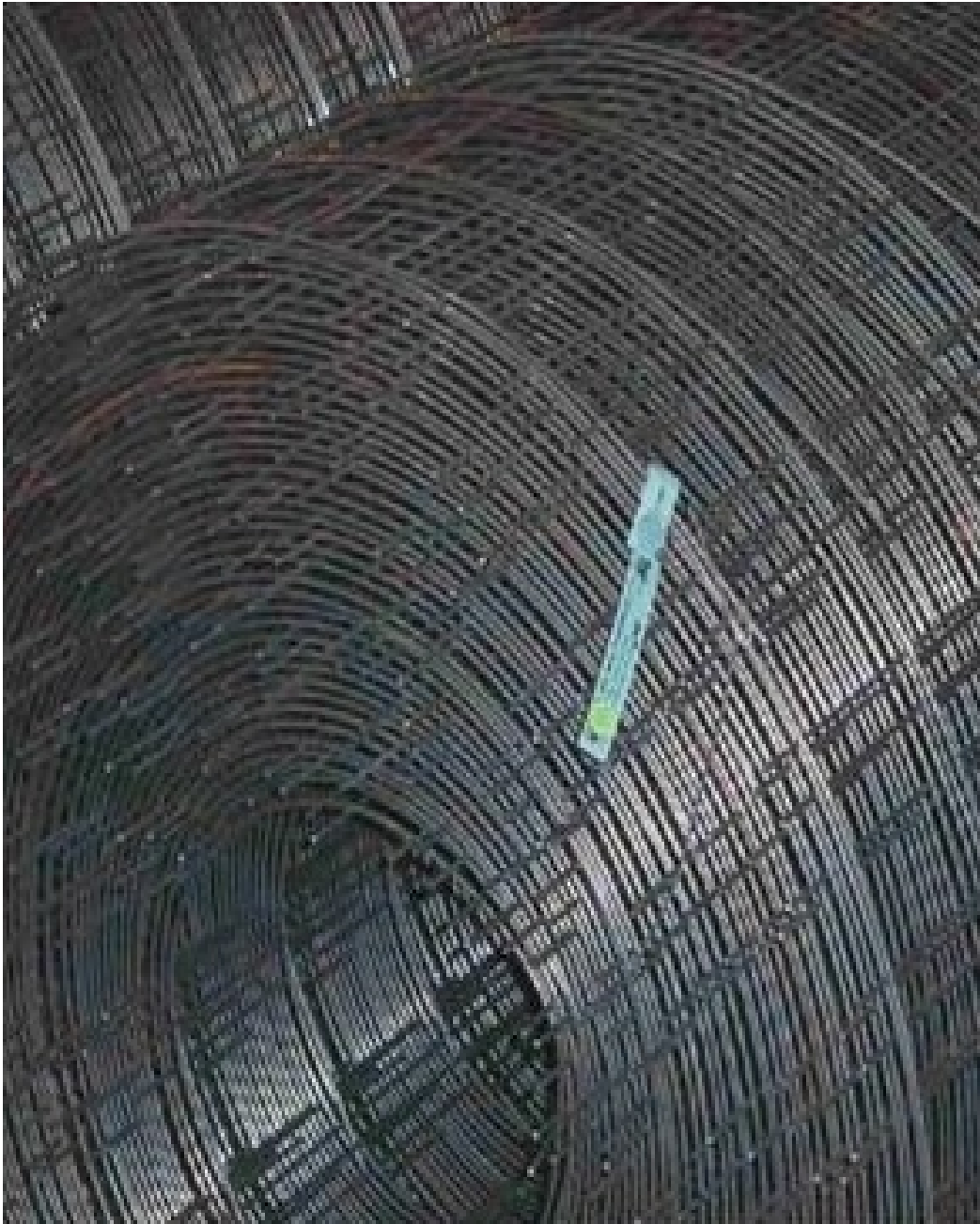


Market description: Reinforcing Welded Steel Mesh (sheets)

Tariff code: 7314.20

Import tariff duties: General = 5%

EU & SADC = Free of duty

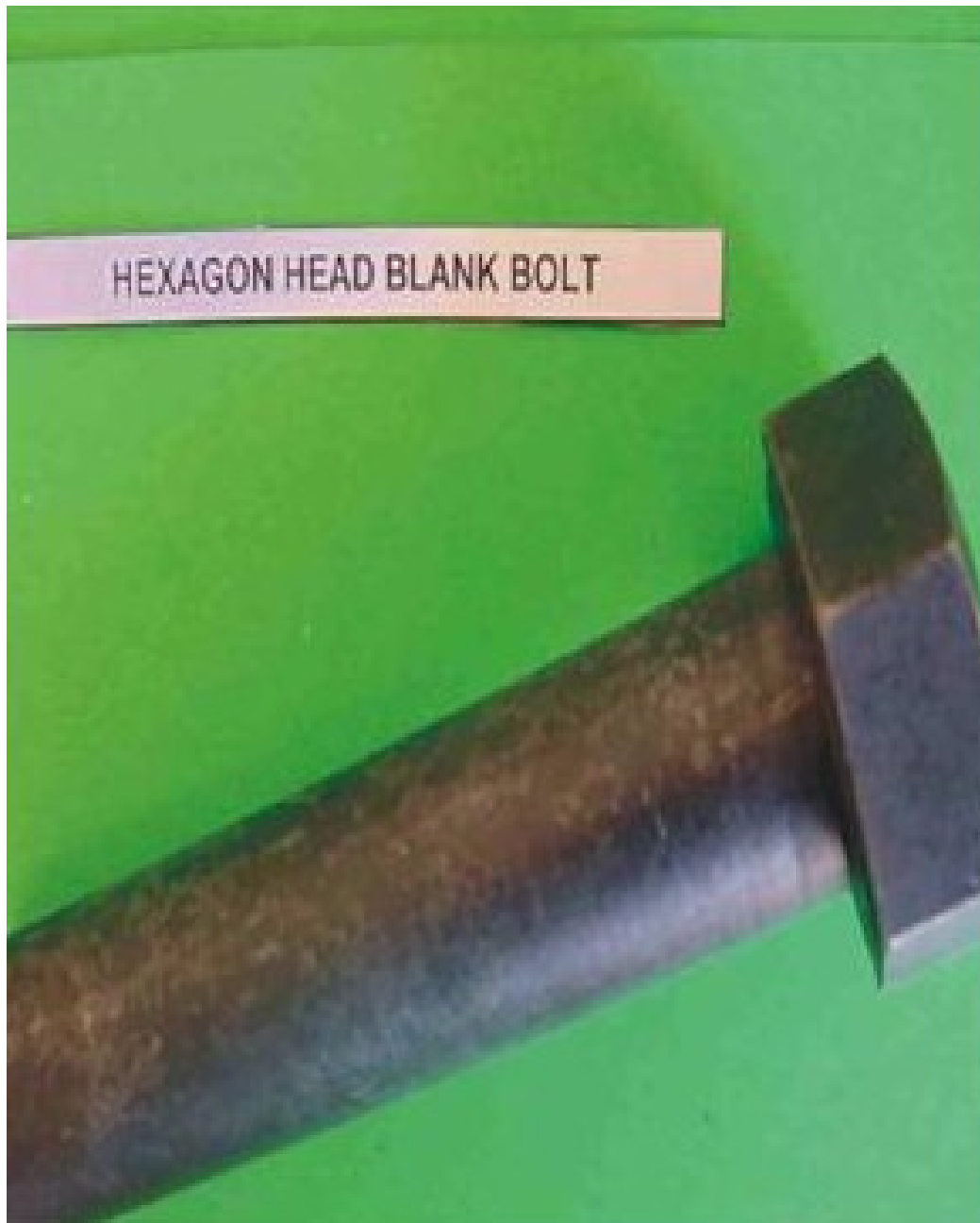


Market description: Reinforcing Welded Steel Mesh (coiled)

Tariff code: 7314.20

Import tariff duties: General = 5%

EU & SADC = Free of duty



Market description: Hexagon Head Blank Bolt

Tariff code: 7318.29

Import tariff duties: Free of duty



Market description: Hexagon Head Bolt (not plated or coated)

Tariff code: 7318.15.90

Import tariff duties: General = 10% (excluding EU)

EU = 7,5%, SADC = 0%

Anti-dumping duties: China = 29% (See Jacobsens)



Market description: Hexagon Head Bolt (galvanised)

Tariff code: 7318.15.90

Import tariff duties: General = 10%

EU = 7,5%, SADC = 0%

Anti-dumping duties: China = 29% (See Jacobsens)



Market description: Hexagon Head Bolt (yellow passivated)

Tariff code: 7318.15.90

Import tariff duties: General = 10%

EU = 7,5%, SADC = 0%

Anti-dumping duties: China = 29% (See Jacobsens)



Market description: Hexagon Head Screw

Tariff code: 7318.15.90

Import tariff duties: General = 10%

EU = 7,5%, SADC = 0%

Anti-dumping duties: China = 29% (See Jacobsens)



Market description: Hexagon Flange Nut

Tariff code: 7318.16.90

Import tariff duties: General = 10%

EU = 7,5%, SADC = 0%



Market description: Hexagon Nut

Tariff code: 7318.16.90

Import tariff duties: General = 10%

EU = 7,5%, SADC = 0%

Anti-dumping duties: China = 36%, Taiwan = 23% (See Jacobsens)



Market description: Hexagon Steel Weld Nut

Tariff code: 7318.16.90

Import tariff duties: General = 10%

EU = 7,5%, SADC = 0%

Anti-dumping duties: China = 36%, Taiwan = 23% (See Jacobsens)

**LARGE BORE WELDED STEEL PIPES
WITH A DIAMETER GREATER THAN 406,4mm
TARIFF HEADING: 7305**

7305.1 Line pipe used for the conveyance of oil or gas.

Due to the high risk involved in the construction of petroleum pipelines, this category of pipe is produced to high specifications such as API (American Petroleum Institute) 5L. Pipes are supplied loose, with beveled ends and coated with a mill varnish or special anti-corrosion coating. Standard lengths are 6, 12, and 18m.

7305.11 refers to *longitudinally SAW* line pipe i.e. large heavy wall pipe manufactured from steel plate rather than coil.

7305.12 refers to *ERW longitudinally welded* line pipe in the size range 457 to 600mm diameter manufactured from steel coil.

7305.19 refers to *spirally welded* line pipe produced to specifications for oil and gas pipelines.

7305.20 Casing and tubing of a kind used in drilling for oil and gas.

As 7305 refers to pipe greater than 406mm in diameter it is very unlikely that any pipe of this size could be used for drilling purposes. However it could possibly be used for casing.

7305.31 Other, longitudinally welded.

This heading covers all other longitudinally welded pipes i.e. pipes NOT used for oil and gas pipelines or drilling purposes, usually categorised as *standard* pipe.

7305.31.10 refers to a particular application (high pressure hydro-electric conduit) and pipe imported under this heading is duty free. ***Proof that the pipe will be used for this application must be furnished by the importer.***

7305.31.90 refers to standard ERW and SAW longitudinally welded pipe.

7305.39 Other (*welded*)

By elimination, this heading covers all pipe which is NOT classified as line pipe, drill casing or longitudinally welded pipe i.e. *spirally welded standard* pipe.

7305.39.10 see **7305.31.10 above**

7305.39.90 refers to spirally welded standard pipe.

7305.90 Other (*not welded*)

7305 refers to welded, *riveted or similarly closed*... 7305.90 applies to such *non-welded* methods of closure. It is very unlikely that any such pipes are still being produced today.

7305.90.10 see **7305.31.10 above.**

7305.90.90 refers to riveted or similarly closed pipes.

**WELDED CARBON STEEL TUBES, PIPES AND HOLLOW
PROFILES WITH DIAMETERS NOT EXCEEDING 406,4mm
TARIFF HEADING: 7306**

7306.10 Line pipe used for the conveyance of oil or gas.

Due to the high risk involved in the construction of petroleum pipelines, this category of pipe is produced to high specifications such as API (American Petroleum Institute) 5L. Pipes are supplied loose or in strapped bundles, with beveled ends and coated with a mill varnish or special anti-corrosion coating. Standard lengths are 6, 12, and 18m.

7306.20 Casing and tubing of a kind used in drilling for oil and gas.

This heading covers pipes and tubing, welded by the ERW (Electric Resistance Welding) or HFI (High Frequency Induction) welding process. These pipes are typically referred to as "Medium or Heavy Borehole Exacts" and are always galvanised.

Standard lengths are 6.0m, but may range from 3.0m to 12.0m. Pipes are typically strapped and bundled in quantities ranging from 91 pipes per bundle (small diameter) to 7 pipes per bundle (larger diameters). All pipes are internally scarfed (a process that removes the internal weld bead), except for diameters less than 40mm. Diameters range from 25mm nominal bore to 100mm nominal bore

for Medium classes (wall thickness ranging from 2.8mm to 3.9mm), and from 32mm to 50mm (wall thickness ranging from 3.5mm to 3.9mm) for Heavy classes.

Pipes are typically supplied as screwed and socketed, (with sockets fitted), or screwed only with plastic protection end caps.

7306.30 Other, welded, of circular cross-section, of iron or non-alloy steel.

This heading covers ERW or HFI welded pipes and tubes which are NOT classified as line pipe or used for drilling purposes. These pipes are typically referred to as *Standard Pipe* and are used for general conveyance, mechanical and structural applications.

Standard lengths are 6.0m, but may range from 3.0m to 12.0m. Pipes are typically strapped in bundles weighing from 1 ton to 2 tons per bundle. Outside diameters range from 25mm to 406mm.

Conveyance tubing:

These pipes may have finishes ranging from uncoated (self-colour), mill coating, black or red coating, or galvanised. Ends may include unfinished (burrs protruding), plain ended (smooth finish), beveled ends, or threaded ends. Threaded ends may be unprotected or have plastic protection caps or sockets fitted. (In some instances whole bundles may have end wrapping as protection). Pipes may be internally scarfed (a process that removes the internal weld bead), except for the smallest diameters. External scarfing is standard practice. Also referred to as *Pressure Pipe*, small bore galvanised tube is used for plumbing applications and larger sizes for water distribution systems.

Mechanical Tubing:

These pipes may have finishes ranging from uncoated (self-colour) or mill coating. Ends may include unfinished (burrs protruding) or plain-ended (smooth finish). Wall thicknesses are typically less than 3.0mm and are used mainly for the manufacturing of implements, furniture and vehicle accessories. Tubes are not usually scarfed internally but are typically scarfed externally.

Structural Tubing:

These pipes may have finishes ranging from uncoated (self-colour), mill coating or may be galvanised. Ends may include unfinished (burrs protruding) or plain-ended (smooth finish). Wall thicknesses are typically greater than 2.5mm. These heavier tubes and pipes are used in structures such as buildings and bridges. Pipes are generally scarfed externally only.

7306.60 Other, welded, of non-circular cross-section.

This heading refers to closed hollow sections or profiles, welded by the ERW (Electric Resistance Welding) or HFI (High Frequency Induction) welding process. The pipes are typically referred to as Mechanical or Structural Tubing. These tubes are square or rectangular in cross-section.

Standard lengths are 6.0m, but may range from 3.0m to 12.0m. Tubes are typically supplied strapped and bundled. Sizes range from 25x25mm to 300x300mm.

Mechanical Tubing:

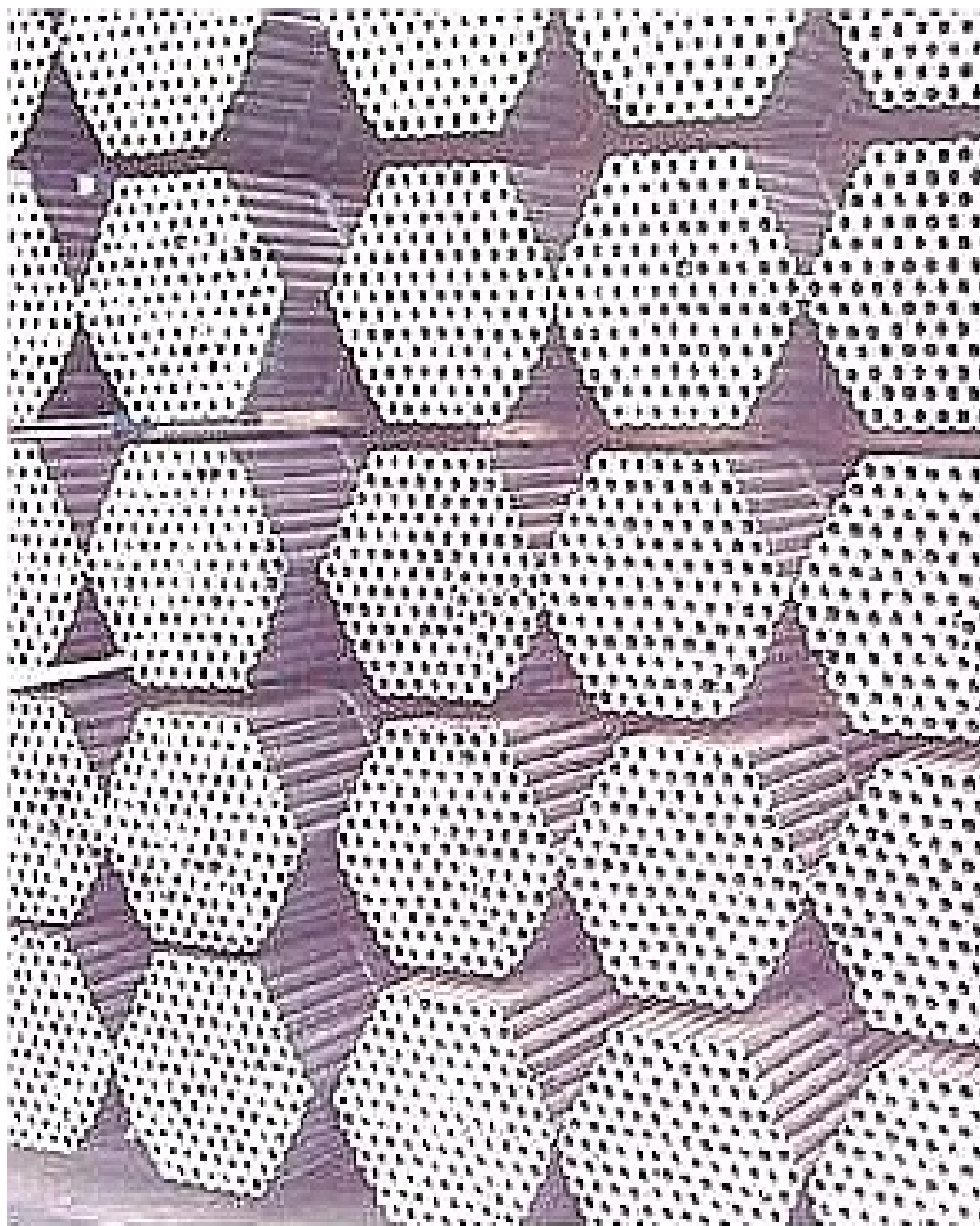
These pipes may have finishes ranging from uncoated (self-colour) or mill coating. Ends may include unfinished (burrs protruding) or plain-ended (smooth finish). Wall thicknesses are typically less than 3.5mm and are used mainly for the manufacturing of implements, furniture and vehicle accessories. Tubes are not usually scarfed internally, but typically scarfed externally.

Structural Tubing:

These pipes may have finishes ranging from uncoated (self-colour), mill coating or may be galvanised. Ends may include unfinished (burrs protruding) or plain-ended (smooth finish). Wall thicknesses are typically greater than 2.5mm and are used in structures. Tubes are generally supplied externally scarfed.



Market description: Welded Small Diameter Carbon Steel Pipe
Tariff codes: 7306.10 and 7306.30 and 7306.90
Import tariff duties: General = 10%
EU % SADC = Free of duty



Market description: Welded Small Diameter Carbon Steel Pipe
Tariff codes: 7306.10 and 7306.30 and 7306.90
Import tariff duties: General = 10%
EU % SADC = Free of duty

TARIFF HEADING: 7307

7307.1 Tube or Pipe Fittings, of Iron or Steel

This heading covers all types or fittings for pipes, made from Steel or Cast iron (non-malleable). This is the only tariff heading that applies to pipe fittings. Fittings may be plain or threaded as required. Cast iron fittings are typically non-straight elements and can be easily identified by the surface finish, which is typically rough, with an extrusion bead. Ends may be grooved (no internal screw thread) or ungrooved (with internal screw thread). Steel fittings are generally straight fittings, formed from round standard pipe, with an internal screw end.

Cast Iron Fittings:

- Equal Tees – Straight fitting with an equal diameter leg protruding at 90° to centre line. Ends may be grooved or have an internal screwed finish. Finishes typically include galvanised or self-colour (typically no oil). Sizes range from 40mm (0,9kg) to 250mm (25,9kg).
- Reducing Tees – Straight fitting with a smaller diameter leg protruding at 45° or 90° to centre line. Ends may be grooved or have an internal screwed finish. Finishes typically include galvanised or self-colour (typically no oil). Sizes range from 50 x 25mm (1,5kg) to 200 x 100mm (12,8kg).
- Blank Ends – Thin blank flanges (solid) with a small protruding straight pipe end. Pipe end may be grooved or have an internal screwed finish. Finishes typically include galvanised or self-colour (typically no oil). Sizes range from 40mm (0,1kg) to 250mm (3,6kg).
- Stub Ends – Same as blank ends, but with same diameter grooved end.
- Reducers – Straight fitting with a reduction in diameter at one end. Ends are typically grooved or may have an extension pipe with screwed ends on the smaller diameter. Finishes typically include galvanised or self-colour (typically no oil). Sizes range from 60 x 50mm (1,5kg) to 200 x 150mm (7.5kg).
- Adapters – Straight fitting with a short length of pipe between finished ends. Ends may be grooved,

- screwed or flanged. Finishes typically include galvanised or self-colour (typically no oil). Sizes range from 40mm (0,7 – 1,7kg) to 200mm (4,8 – 11,3kg).
- Elbows – Curved length of pipe with a total enclosed angle of 45° or 90°. (Also referred to as Bends). Ends may be grooved or have an internal screwed finish. Finishes typically include galvanised or self-colour (typically no oil). Sizes range from 50mm (1,3kg) to 200mm (14,5kg).
- Setting Pieces – Straight lengths of short pipe with the ends offset from 90°. (Similar to adapters, except for the skewed ends). Finishes typically include galvanised or self-colour (typically no oil). Sizes range from 50mm (0,8kg) to 200mm (6,5kg).

7307.9 Other

Steel Fittings:

These fittings are manufactured from standard pipe and have the same external surface appearance as pipe. (I.e. smooth surface with the absence of protruding beads).

- Adapters – Straight fitting with a short length of pipe between finished ends. Ends may be screwed (internally or externally) or flanged. Finishes typically include galvanised (treaded portion excluded) or self-colour (typically no oil). Sizes range from 40mm to 20mm.